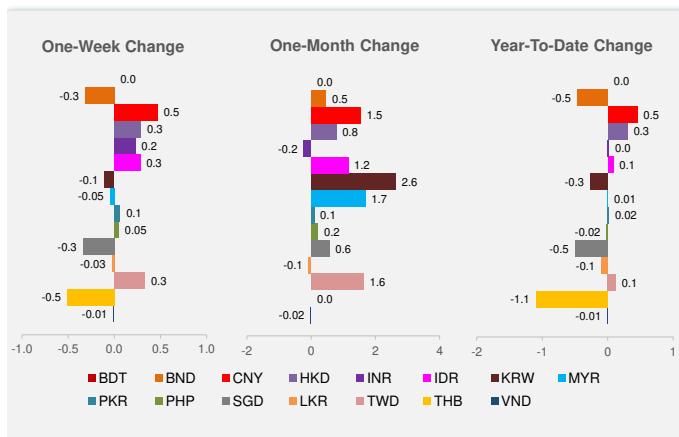
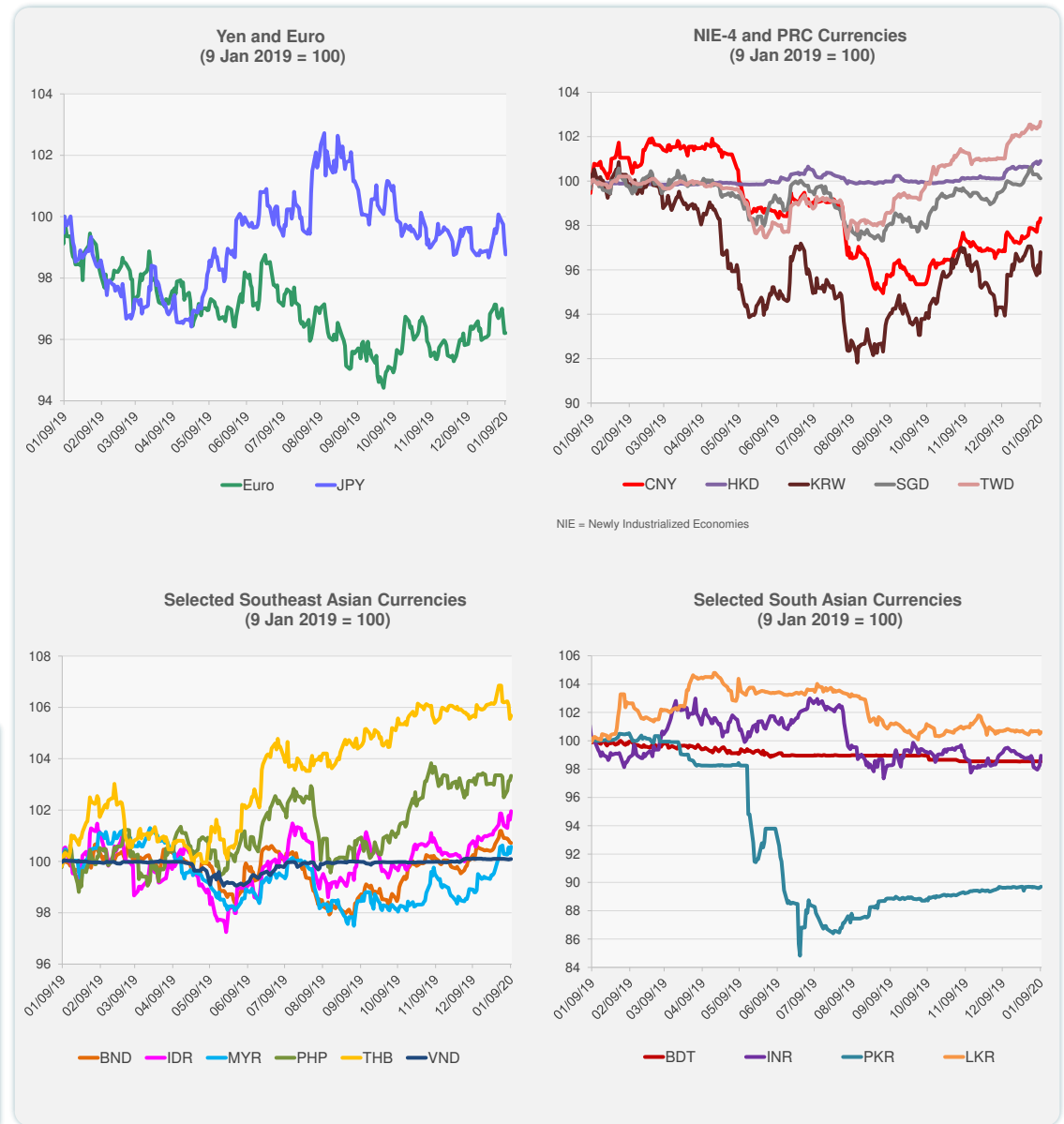


	Latest Closing	% change from Previous Day	% change from 01-Jan-20
Euro	0.90	0.01	-0.95
Japanese yen (JPY)	109.52	-0.37	-0.69
Bangladeshi taka (BDT)	84.88	0.00	0.00
Brunei dollar (BND)	1.35	-0.02	-0.47
Chinese yuan (CNY)	6.93	0.21	0.45
Hong Kong dollar (HKD)	7.77	0.11	0.30
Indian rupee (INR)	71.21	0.69	0.02
Indonesian rupiah (IDR)	13,854.00	0.33	0.09
Korean won (KRW)	1,159.35	0.99	-0.27
Malaysian ringgit (MYR)	4.09	0.25	0.01
Pakistan rupee (PKR)	154.87	0.08	0.02
Philippine peso (PHP)	50.66	0.18	-0.02
Singapore dollar (SGD)	1.35	-0.04	-0.50
Sri Lanka rupee (LKR)	181.35	0.12	-0.10
Taipei,China NT dollar (TWD)	30.00	0.23	0.12
Thai baht (THB)	30.30	0.12	-1.10
Vietnamese dong (VND)	23,175.00	0.00	-0.01

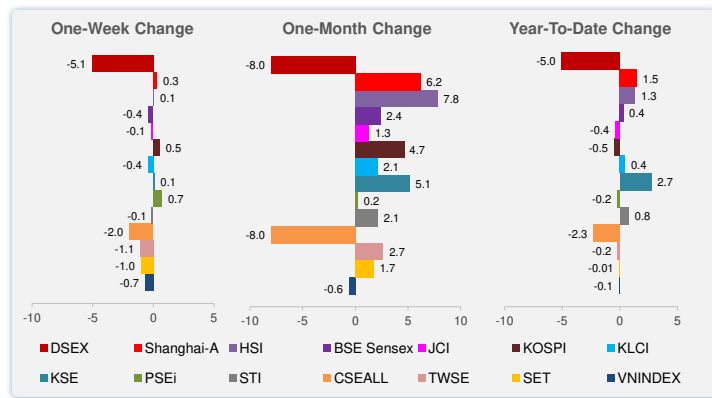
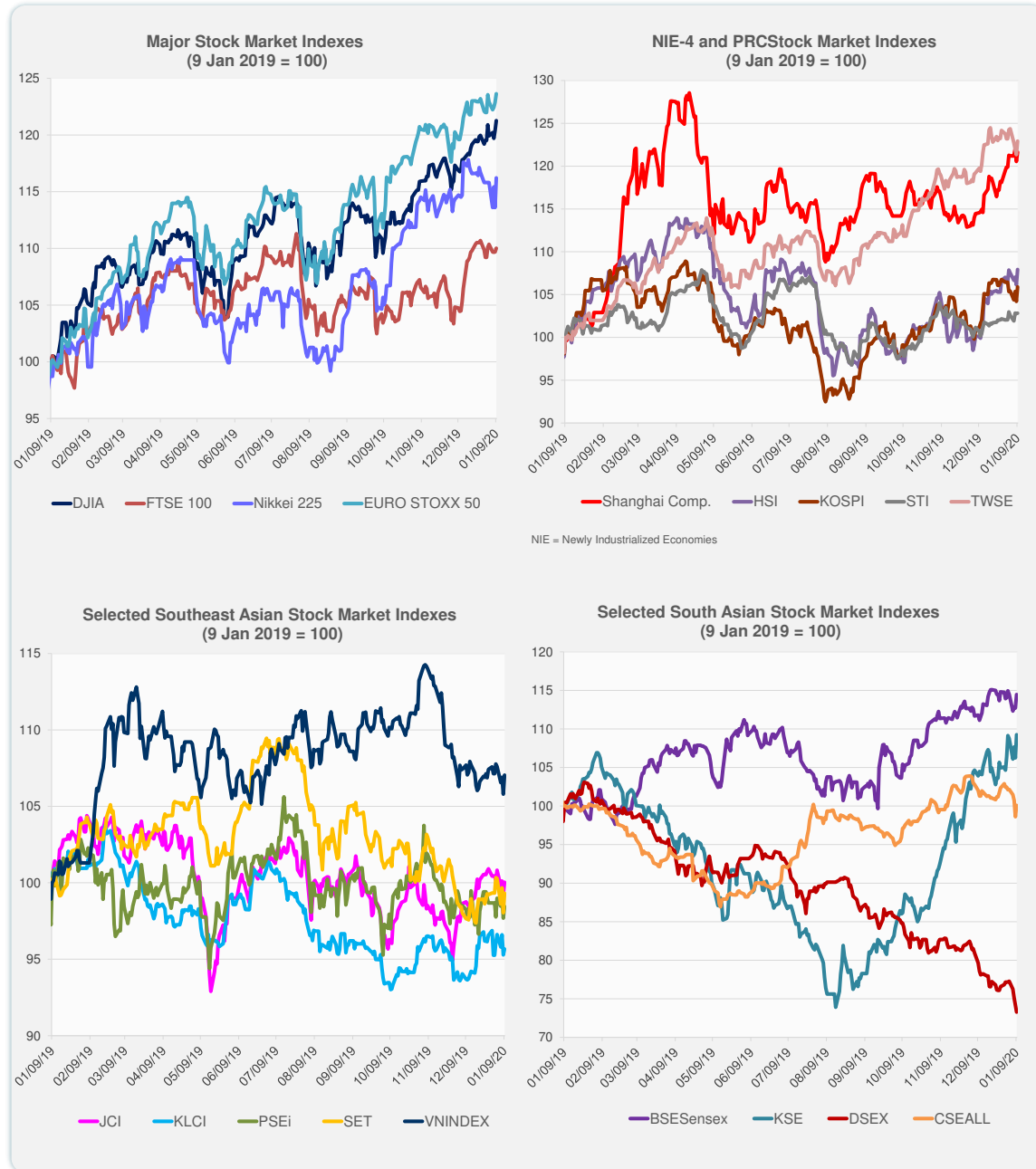


Note: Negative/Decreasing values indicate depreciation of local currency, and positive/increasing values indicate appreciation.
Source: Bloomberg.



Source: Bloomberg.

	Latest Closing	% change from Previous Day	% change from 01-Jan-20
US Dow Jones Ind Avg	28,956.90	0.74	1.47
US NASDAQ	9,203.43	0.81	2.57
US S&P 500	3,274.70	0.67	1.36
UK FTSE 100	7,598.12	0.31	0.74
EURO STOXX 50	3,795.88	0.62	1.35
Japan NIKKEI 225	23,739.87	2.31	0.35
Bangladesh DSEX	4,228.37	-1.24	-5.04
PRC Shanghai Comp.	3,094.88	0.91	1.47
Hong Kong, China HSI	28,561.00	1.68	1.32
India BSE Sensex	41,452.35	1.55	0.35
Indonesia JCI	6,274.49	0.78	-0.40
Korea, Rep. of KOSPI	2,186.45	1.63	-0.51
Malaysia KLCI	1,595.65	0.41	0.43
Pakistan KSE 100	42,523.07	2.82	2.71
Philippines PSEi	7,797.64	0.79	-0.23
Singapore STI	3,247.48	0.05	0.76
Sri Lanka CSEALL	5,987.55	1.50	-2.31
Taipei, China TWSE	11,970.63	1.30	-0.22
Thailand SET	1,579.64	1.31	-0.01
Viet Nam VNINDEX	960.15	1.18	-0.09



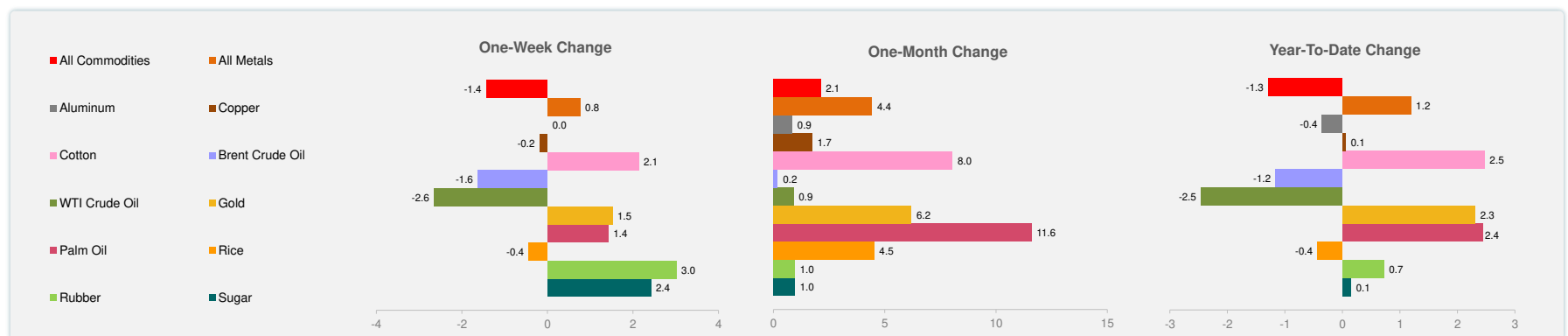
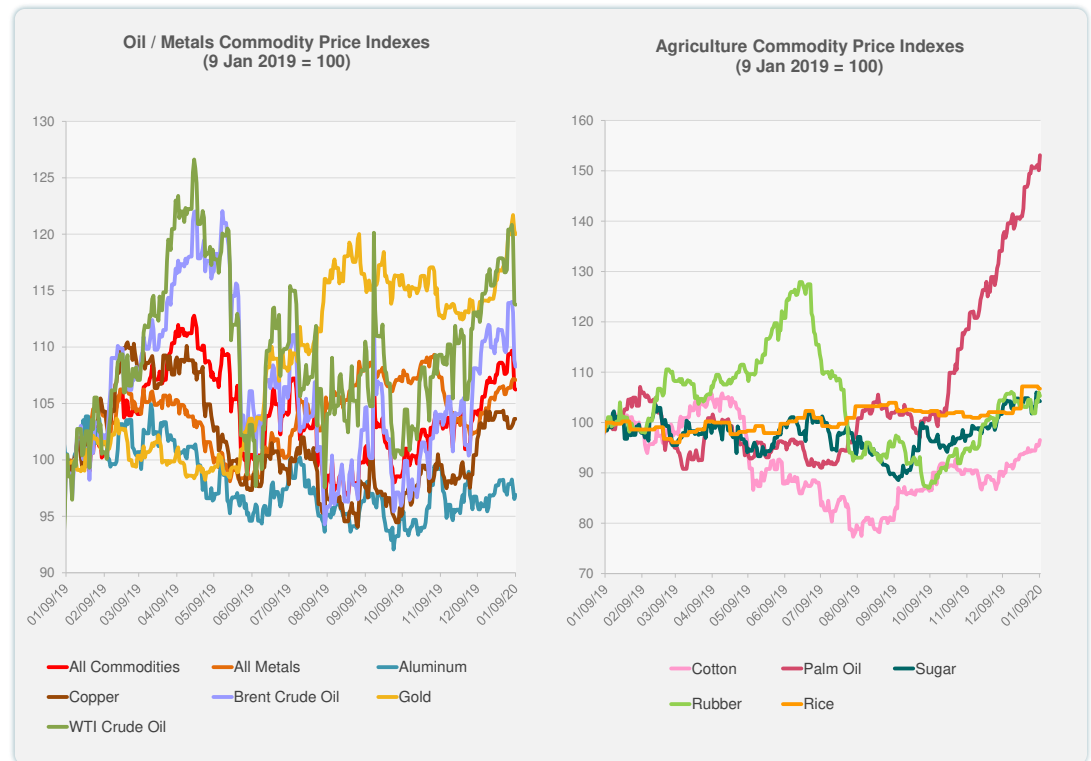
Source: Bloomberg.



Source: Bloomberg.

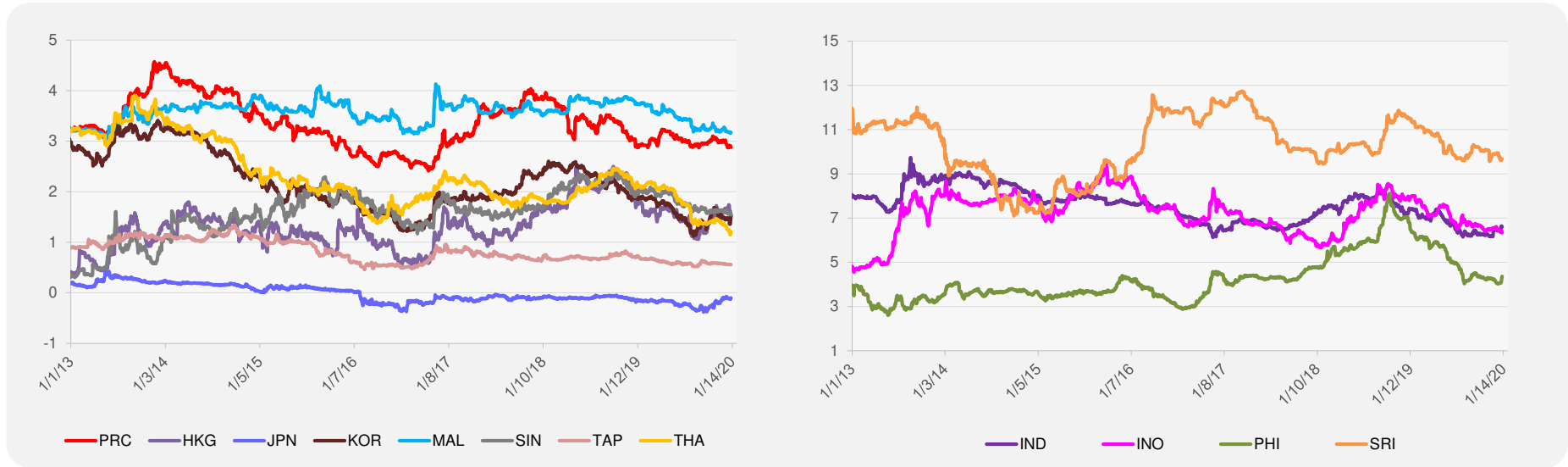
	Unit	Latest Closing	% change from Previous Day	% change from 01-Jan-20
S&P All Commodities	US\$	430.60	-0.10	-1.29
S&P All Metals	US\$	220.14	-0.07	1.19
Aluminum	US\$/metric ton	1,775.00	0.38	-0.35
Copper	US\$/metric ton	6,152.50	0.00	0.06
Cotton	US cents/lb	67.94	1.09	2.47
Brent Crude Oil	US\$/barrel	65.54	-0.53	-1.16
WTI Crude Oil	US\$/barrel	59.56	-0.08	-2.46
Gold	US\$/troy oz	1,552.32	-0.26	2.31
Palm Oil	US\$/metric tonne	757.57	2.00	2.44
Rice ¹	US\$/metric ton	461.00	0.00	-0.43
Rubber ²	US\$/kg	167.50	-0.65	0.72
Sugar	US cents/lb	13.56	0.00	0.15

¹ Latest closing price from 8 January 2020.
² Singapore Exchange, Ribbed Smoked Sheet Rubber.

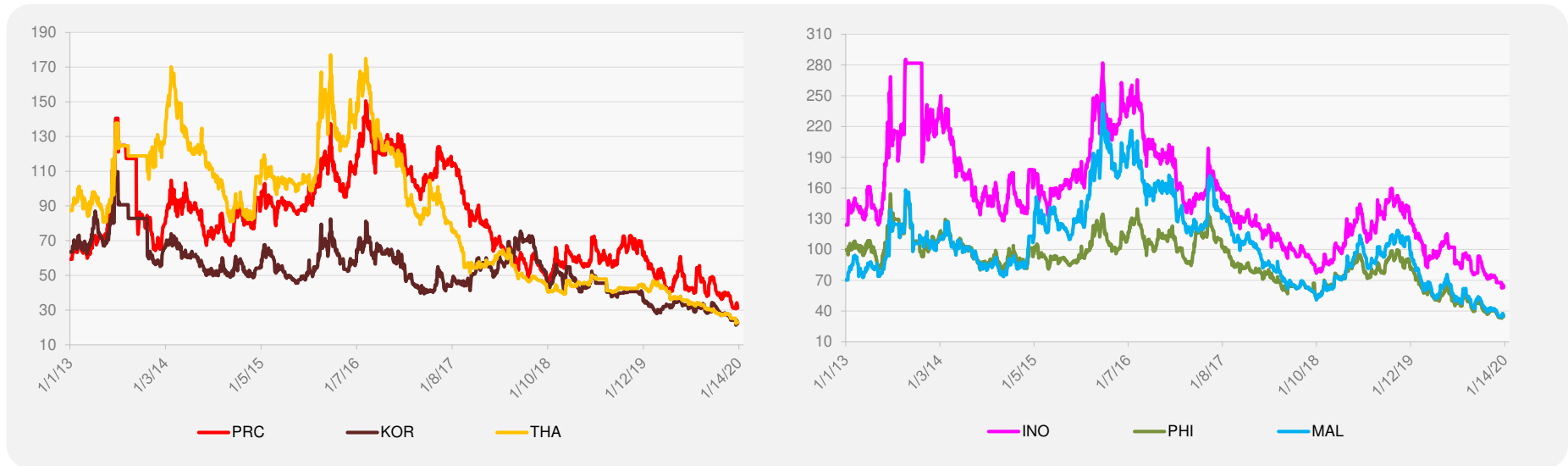


Source: Bloomberg.

5-YEAR LOCAL CURRENCY GOVERNMENT BOND YIELDS (%)



5-YEAR CREDIT DEFAULT SWAP¹



¹ In USD and based on sovereign bonds.
Source: Bloomberg.